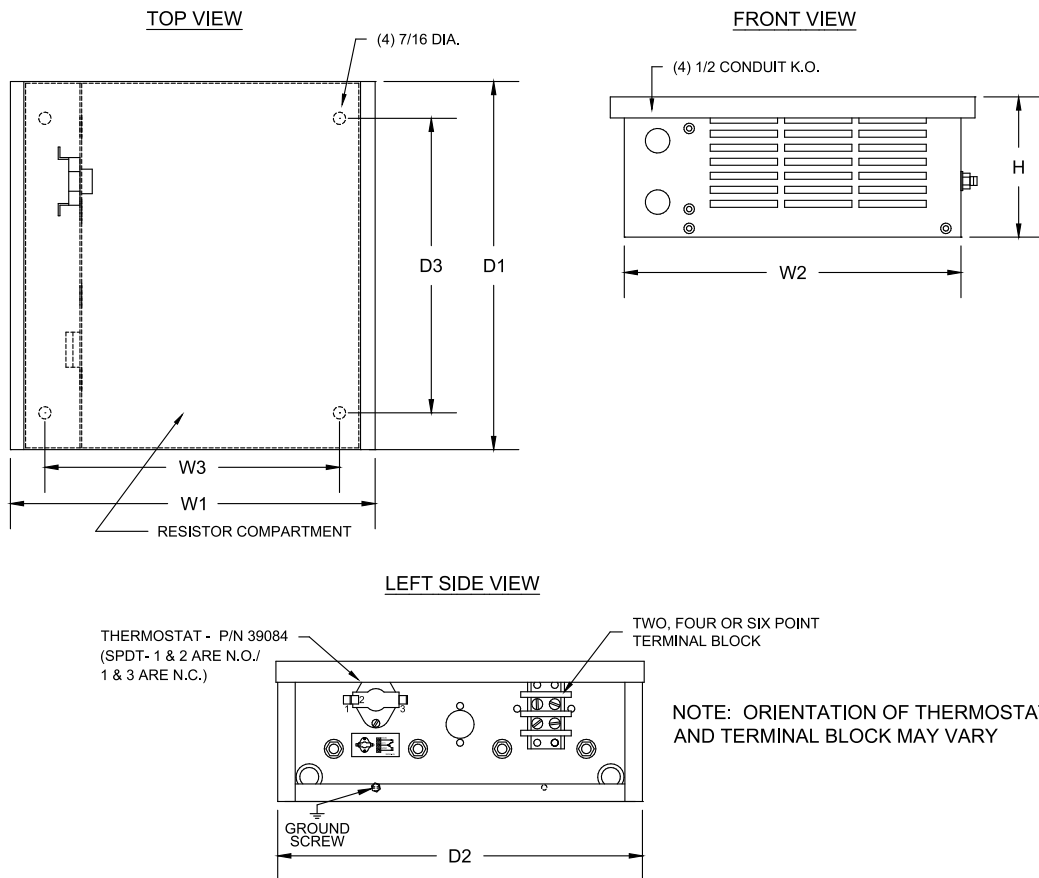


**Title:** Yaskawa Braking Resistors

**Product(s):** All Drives

**Doc. No.** PN.RESISTORS.01

## GCE Enclosure Dimensions and Drawings



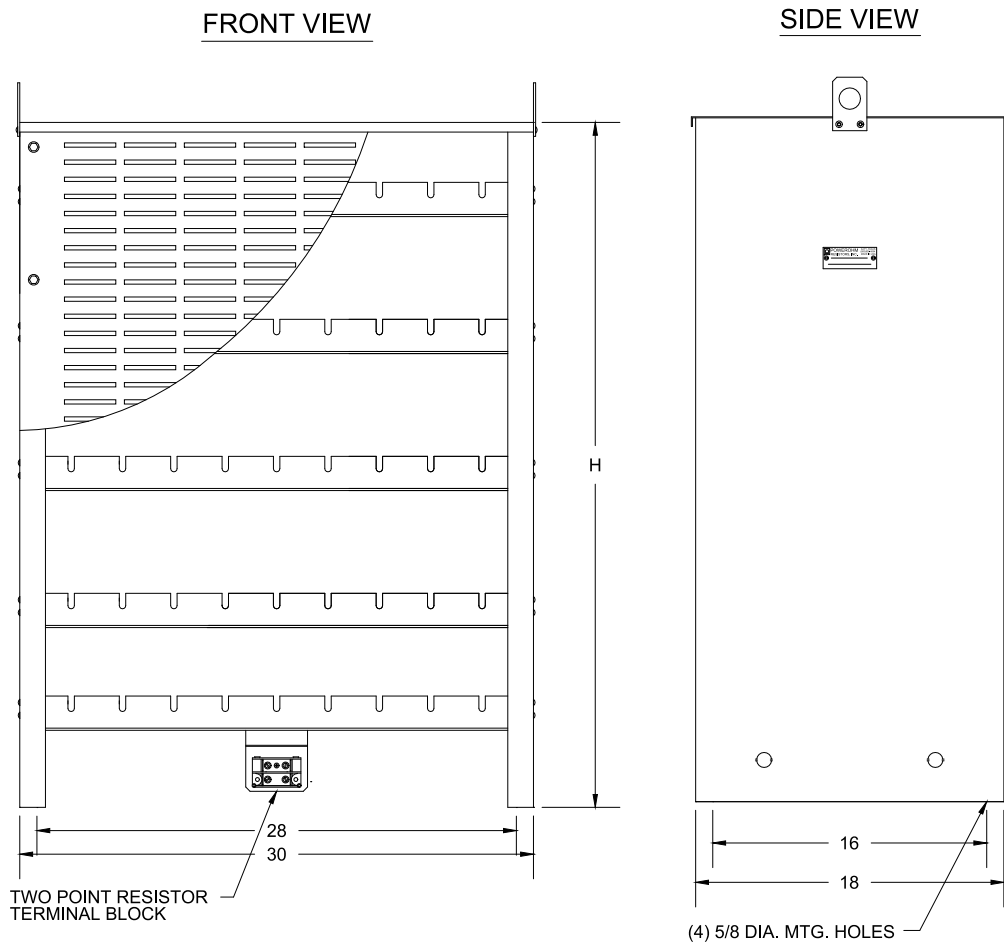
Enclosure	W1	W2	W3	D1	D2	D3	H
GCE1	12 1/2	12	10 1/2	5 1/8	5	---	5
GCE2	12 1/2	12	10 1/2	7 1/8	7	4 1/2	5
GCE3	12 1/2	12	10 1/2	10 1/8	10	7 1/2	5
GCE4	12 1/2	12	10 1/2	13 1/8	13	10 1/2	5
GCE5	12 1/2	12	10 1/2	16 1/8	16	13 1/2	5
GCE6	19 1/2	19	17 1/2	10 1/8	10	7 1/2	5
GCE8	19 1/2	19	17 1/2	13 1/8	13	10 1/2	5
GCE9	27	26 1/2	25	10 1/8	10	7 1/2	5
GCE10	19 1/2	19	17 1/2	16 1/8	16	13 1/2	5
GCE12	27	26 1/2	25	13 1/8	13	10 1/2	5
GCE15	27	26 1/2	25	16 1/8	16	13 1/2	5
GCE18	28 1/2	28	26 1/2	10 1/8	10	7 1/2	10
GCE24	28 1/2	28	26 1/2	13 1/8	13	10 1/2	10
GCE30	28 1/2	28	26 1/2	16 1/8	16	13 1/2	10

**Title:** Yaskawa Braking Resistors

**Product(s):** All Drives

**Doc. No.** PN.RESISTORS.01

## ED Enclosure Drawings



Enclosure	W1	W2	W3	D1	D2	D3	H
ED1	18	18	16	30	30	28	10
ED2	18	18	16	30	30	28	16
ED3	18	18	16	30	30	28	24
ED4	18	18	16	30	30	28	32
ED5	18	18	16	30	30	28	40
ED6	18	18	16	30	30	28	48
ED7	18	18	16	30	30	28	56
ED8	18	18	16	30	30	28	64
ED9	18	18	16	30	30	28	72